

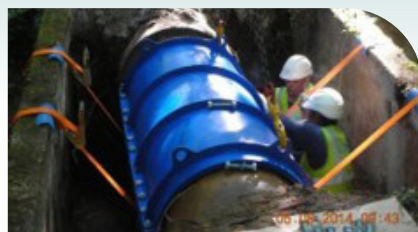
## INTERVENTION SOLUTIONS



### Customised services

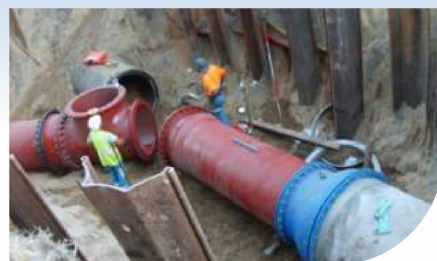
#### Made-to-measure repair parts

**Repair of large-dimension pipes** in buried networks or in pumping stations.



#### Special or exceptional connections

**Network renovation** by connecting different pipes and structures.



#### Made-to-measure storage

**Portable storage racks** for cast iron pipes.



## METERING & MONITORING



### Optimising the performance of water networks

#### ITRON metering and remote meter reading



#### Leak detection

**Prelocating, correlating, pinpointing**



BiDi

#### Control



Claire,

Solutions for every step in the water cycle

ensure network longevity and preserve resources.



Consumer house connection  
Metering & Monitoring



Network solutions



Intervention solutions

Check out our  
**PRODUITS\_CLAIRE**  
app now...

... and browse through our range of  
equipment for high-performance  
water networks!

It's all in your pocket...

**Product catalogue**  
The whole range of  
Claire equipment.

**Your bookmarks**  
View your selection of  
references and share it.

**Your tools**  
• Search by QR code  
• Torch

**Offline mode**  
View products and associated  
documentation offline!

available on the App Store and Google Play

app-claire.com



SCAN TO DOWNLOAD

groupe-claire.com  
app-claire.com

Follow us



## Drinking Water Supply



Consumer house connection  
Network solutions  
Intervention solutions  
Metering & Monitoring

groupe-claire.com



## CONSUMER HOUSE CONNECTION

**SAI<sup>TE</sup>-LI<sup>ZA</sup>IGNE**, the **consumer house connection** specialist  
GROUPE CLAIRE

The Expert offering for local authorities and operators keen to ensure the longevity and profitability of their network assets



Harsh conditions Raw sewage

**House connection**  
**Asset management for all types of networks**  
**Origine France Garantie**  
(Guaranteed French origin) house connections for all materials  
**OMEGAFLEX** electrofusion hybrid solution for PE networks  
**A solution for all situations and configurations:** from the most universal solution to models designed for specific uses

**Quality / Durability**  
**Bronze**, the only material that is 100% resistant to all corrosion phenomena and that has always been used and tried-and-tested for drinking water house connections

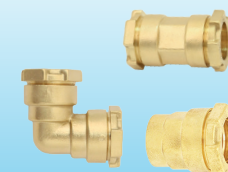
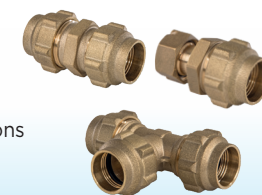
**Easy to fit**  
Fast and secure fitting with the **ALPHA<sup>CLIC</sup>** clamp and its tightening indicator



PRIZDO

### Fittings

**U-CAN range**  
**Connection platform** for easy fitting and maintenance of installations

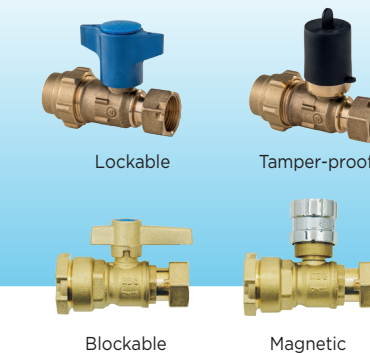


**PRIZDO range**  
A comprehensive range for **standard connection applications**

### Metering environment

**A comprehensive offering for all uses and configurations**

**A variety of before-meter functions**



Lockable

Tamper-proof

Blockable

Magnetic

**U-CAN modularity & O-Link secure connection**

NF-certified **anti-pollution check valves & fitted supports**



## Boxes and Manholes



E-CUB box



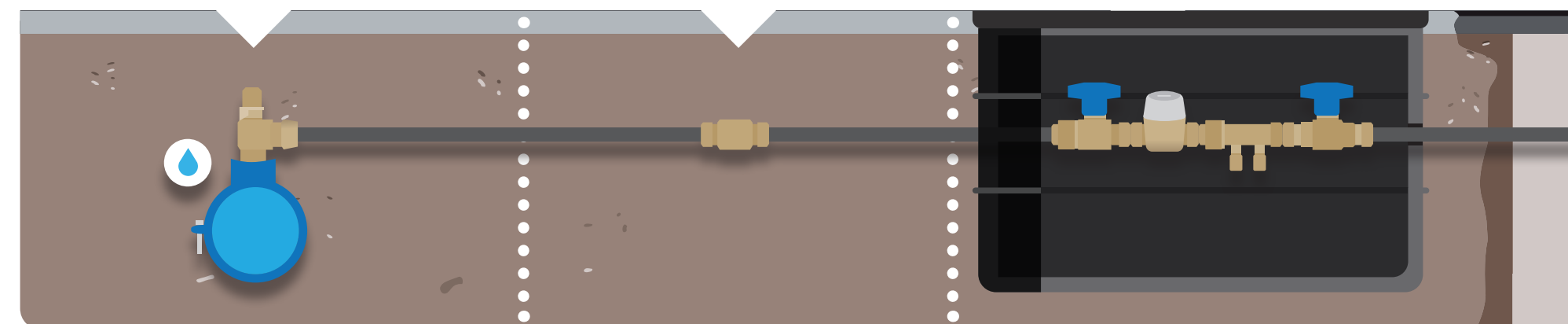
DUO, TRIO, QUATRO manhole



Equipped manholes



ISOCOURT+ manhole



## NETWORK SOLUTIONS

**ADG**, the **connection and repair** expert  
GROUPE CLAIRE

Complete range of couplings, flange adaptors and sleeves



### Connection & Repair

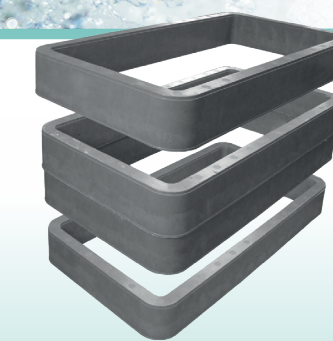
### Sectioning & Protection



### Network access devices



Made-to-measure manhole covers



Modular chambers for faster and safer work



## INTERVENTION SOLUTIONS

**E.I.E** GROUPE CLAIRE to ensure service continuity

### Under-pressure drilling

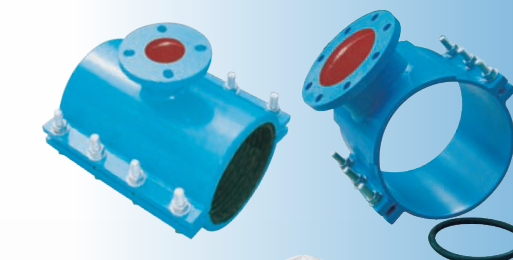


Drilling machines and equipment for small and large-diameter applications, with utilisation-assistance and equipment-repair services.



### Wide range of fixed-flange bypass collars and sleeves

for all pipes and possibility of making other made-to-measure models: other dimensions, tolerances, tangent outlets or rotating flanges to meet your needs in the field.



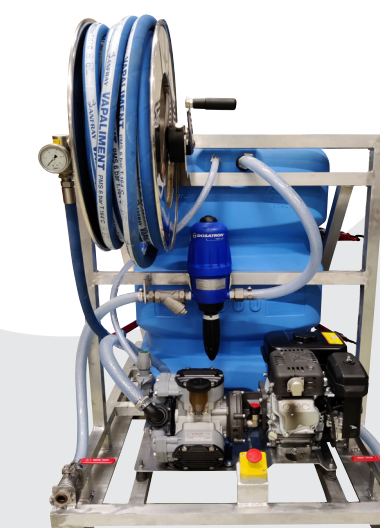
**3D valves**  
Under-pressure fitting **with no interruption to the water supply to customers**  
Time saved for the teams



**ABS plugging system**  
Quick and easy installation to reduce the work area



## Tools, Measurement and Testing



Pipe testing and disinfection



Worksite tools



Fire fighting system control



Detection of pipes and metal objects



Operational tools