

E.I.E
GROUPE CLAIRE



Solutions for working

▶ on water networks
without interrupting
the supply



UNDER-PRESSURE DRILLING

▶ eie.fr
groupe-claire.com
app-claire.com



claire

UNDER-PRESSURE DRILLING



E.I.E
GROUPE CLAIRE

EIE is specialised in drilling and under-pressure equipment, in particular for large-diameter and special-drilling applications.



WIDE RANGE OF FIXED-FLANGE BYPASS COLLARS AND SLEEVES

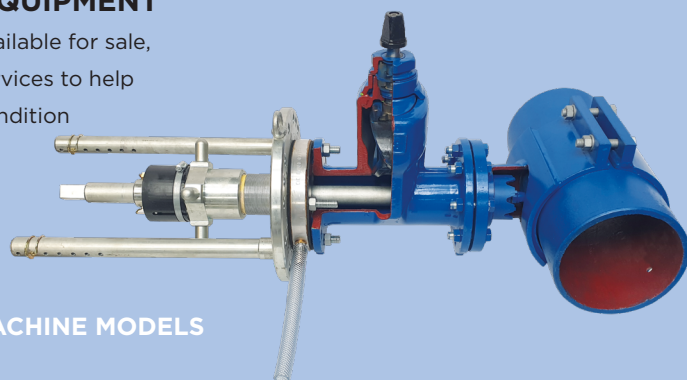
for all pipes and possibility of making other made-to-measure models: other dimensions, tolerances, tangent outlets or rotating flanges to meet your needs in the field.



BYPASSING

DRILLING MACHINES ND 50 to 600 AND DRILLING EQUIPMENT

for all pipe materials, available for sale, rental and a range of services to help you use, repair and recondition your equipment.



THREE DRILLING MACHINE MODELS

ND50-100,
ND50-200 with possibility of extension to ND400,
ND250-600

DRILLING TOOLS FROM ND50 TO 600 FOR ALL TYPES OF PIPES

- carbide milling cutters for cast iron/steel
- solid hole cutters for standard or high-pressure PE
- diamond-segment milling cutters for all materials in line with our recommendations





INNOVATIVE INTERVENTION SOLUTIONS

Cast iron and steel pipes:
ND80 to ND800

PVC pipes
ND75 to 200

PE and AC pipes
Please contact us



Other techniques for working on water supply networks without interrupting the water distribution service



A 3D SHUT-OFF VALVE ND 75 to 800

to be installed under-pressure, saves time for your teams, **without having to cut off the water supply to consumers.**

Various usages: next to a faulty valve, between two valves to create shorter cut-off sections and mesh your network more effectively, upstream and downstream of a bypass to adapt to changes to the network.

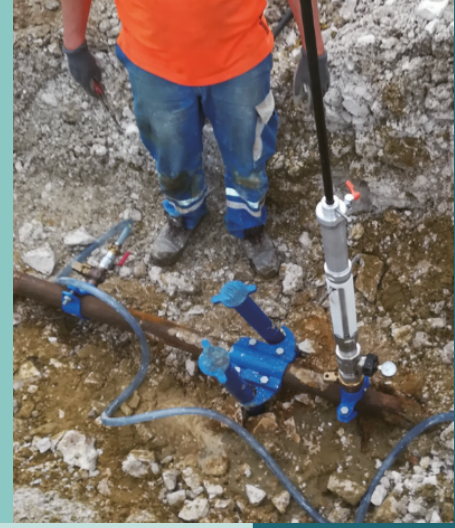


In the Annecy region, the 3D valve has made it possible to close a section of the network linking the canal to the lake. The delivery of too much water from the lake to the canal caused it to overflow into the river thus creating a pollution hazard.

Installation of a 3D ND 600 valve on welded steel helical pipe. Under-pressure drilling without any disruption. The canal can now be isolated from the lake and the risk of polluting the river has been eliminated.



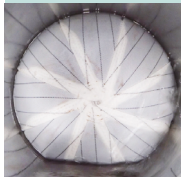
TIONS



THE ABS SHUT-OFF SYSTEM ND 40 to 200

a temporary solution that can be installed simply and quickly by inserting two shut-off balloons in the network, by under-pressure drilling.

A work area kept to the strict minimum to limit water wastage and maintain an optimum service to the consumers.



In the framework of the extension of an industrial site, the ABS system made it possible to install a cut-off valve on the branch of the network that was going to supply the future building, without cutting the main pipe or disrupting the water supply.



Under-pressure installation of two branches: the first one made it possible to insert the ABS shut-off balloon, and the second one to drain the pipe on the downstream side. A retaining collar was installed between the two branches to hold the pipe in place. Once the pipe had been drained, the cut-off valve was installed and the water could be supplied to the new building.



BRANCHING

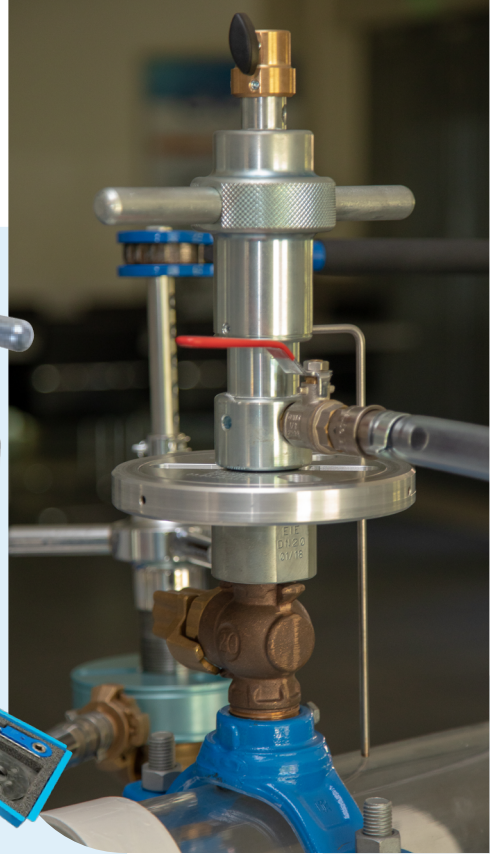
Standard or combined **DRILLING MACHINES**

for ND 20 to 40 used to create, replace and shut off a branch using a single piece of equipment.

A motorisation option is available to facilitate implementation, along with all-in maintenance packages for overhaul and maintenance.

ACCESSORIES

Adaptors for taps, shutting off tools and drilling tools from ND20 to 40



VARIOUS TYPES OF CLAMP SADDLES

for all materials and shut-off collars.

THE ADVANTAGES OF UNDER-PRESSURE DRILLING

Service continuity

Under-pressure drilling enables work to be carried out on the drinking water network without interrupting the water supply to consumers.

Lower work costs

The operation is 2 to 3 times faster than a procedure that involves cutting off the water supply. It also means that there are fewer parts to handle and fewer seals to fit, all of which increase the risk of leaks.



Water resources and the environment safeguarded

No need to drain the pipe before the intervention.

Water consumption is very low and no water is wasted. Very little waste is generated during drilling, only the cut-out disc, which will be recovered.

Flexibility in terms of organisation

Under-pressure operations mean you can manage your work schedule more effectively. Teams are not dependent on the distributor's water supply being shut off, and site contingencies (such as early completion or delays) have no impact on the overall organisation of the works.



E.I.E
GROUPE CLAIRE

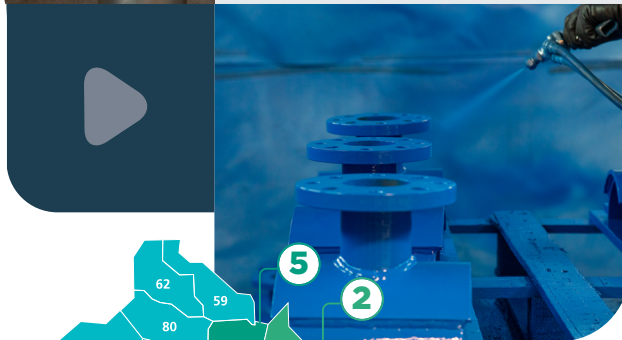


E.I.E
GROUPE CLAIRE

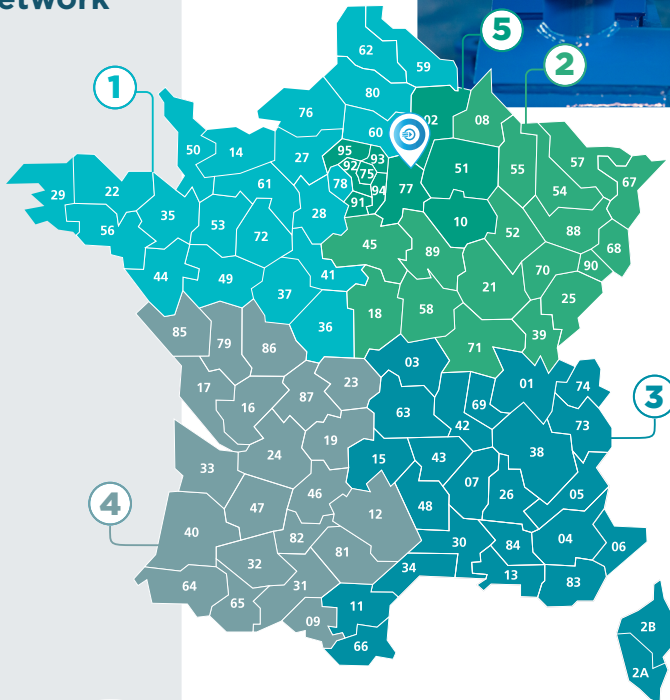
Solutions for working on water networks without interrupting the supply



EIE offers **ready-to-use solutions** for operators in France and abroad, enabling them to **work on water networks without interrupting services**, using the right tools to **branch, connect and repair**.



Our network



Flash me
to access
our on-line
catalogue

1

Vincent GAUTHRON
Sales engineer
33 (0)6 09 76 75 16
vincent.gauthron@eie.fr

2

Linda WOZNICZKA
Sales manager
33 (0)6 20 95 72 31 - 33 (0)1 60 22 33 81
contact@eie.fr

3

Stéphane CARILLON
Sales engineer
33 (0)6 12 14 21 26
stephane.carillon@eie.fr

4

Pascal ALVAREZ
Sales engineer
33 (0)6 25 70 57 57
pascal.alvarez@eie.fr

5

Linda WOZNICZKA
Sales manager
33 (0)6 20 95 72 31 - 33 (0)1 60 22 33 81
contact@eie.fr

EXPORT

Marc CORMERY
Sales manager
33 (0)6 74 99 74 15
marc.cormery@sainte-lizaigne.com

eie.fr

groupe-claire.com
app-claire.com

33 (0)1 60 22 33 81

16 rue du Hainault

77260 Sept Sorts